

# SKY LAM 380 / 720 SUPER

Hot (Single and Double)  
350/700mm Roll Laminators



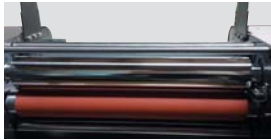
▼ Sky Lam 380 Super



▼ Sky Lam 720 Super



▼ Chrome Top Heating Roller



▼ Anti Curl Control System



▼ Dual Tension Control System



▼ Slitter



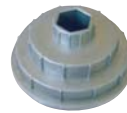
▼ Perforator



▼ Infrared Sensor



▼ Special Core Unit



3 sizes (25, 58 and 76 mm)  
in one unit

▼ Single side Lamination



(BOPP roll film : Max 3,000 m)

▼ Double Side Lamination



- End cutter, air cooling fan, emergency stop switch and safety guard are installed basically. (\* Option : Stand)
- Micom System (Auto Power Off function and Memory function etc)

MODEL	SKY Lam 380 Super	SKY Lam 720 Super
Max. Laminating Width	350 mm (13.8")	700 mm (27.5")
Max. Laminating Speed	6 m/min	5 m/min
Max. Laminating Thickness	13 mm	
Heating System	Heating roller internal heater	
Q'ty of Roller	4	
Temperature Control	Yes	
Speed Control	Yes	
Display	LCD	
Preheating Time	8 min.	
Power Supply	AC 100, 110, 120, 230, 240V (50/60Hz)	
Power Consumption	1,550 watts	
Dimension	700×460×272 mm	1,040×460×272 mm
Weight	55 kgs	80 kgs
Operation Temperature	0 - 150°C	